

Jayco | North Point & Pinnacle Fifth Wheel

LUXURY FIFTH WHEELS

NORTH POINT & PINNACLE



NORTH POINT INTERIOR DESIGN



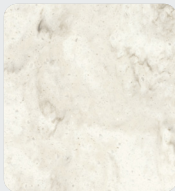
CLASSIC COTTAGE



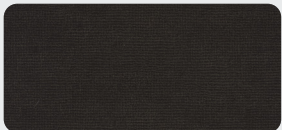
Wood



Floor



Countertop

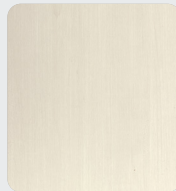


Main Fabric



Accent Fabric

MODERN FARMHOUSE



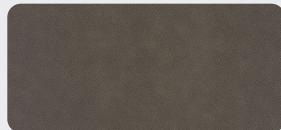
Wood



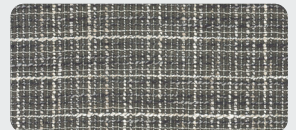
Floor



Countertop



Main Fabric



Accent Fabric



NORTH POINT

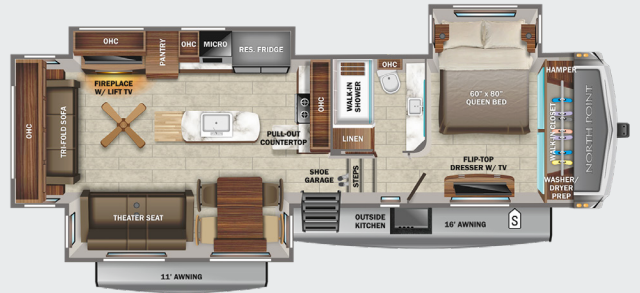
310RLTS

OPTIONS: A, B



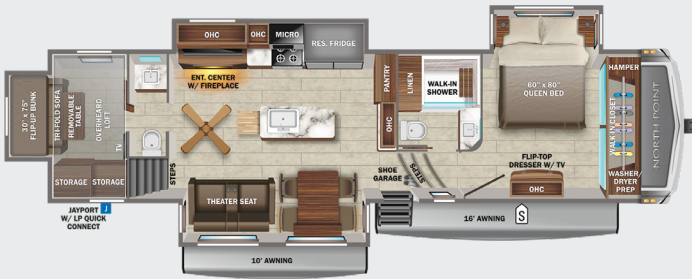
340CKTS

OPTIONS: A, B



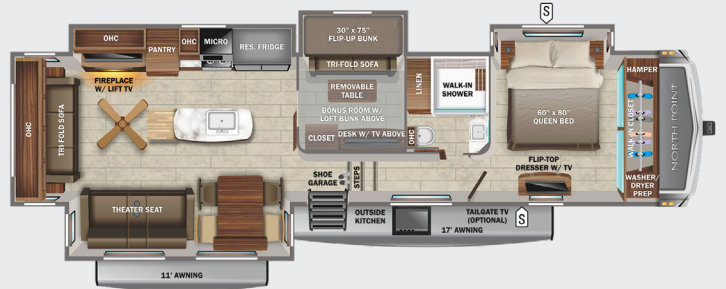
373BHOK

OPTIONS: A, B



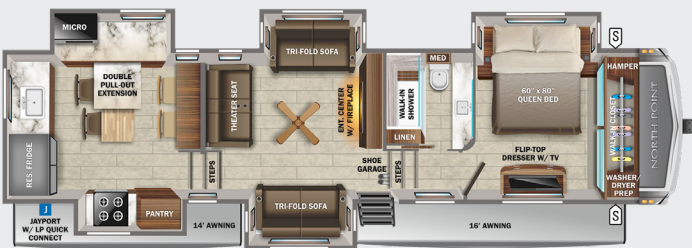
377RLBH

OPTIONS: A, B



380RKG

OPTIONS: A, B





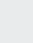


382FLRB

OPTIONS: A, B



OPTIONS

-  STORAGE
-  MICRO MICROWAVE
-  OHC OVERHEAD CABINETS
-  FRIDGE REFRIGERATOR
-  WARD WARDROBE

A



18 Cu. Ft. Fridge

B



King Bed

STANDARDS & OPTIONS

EXTERIOR

Stronghold VBL™ aluminum framed and vacuum bond laminated gelcoated fiberglass exterior walls (including rear wall and slide room end walls)

Magnum Truss™ XL6™ Roof System (strongest tested roof in the industry) with one-piece, seamless roof material with a 20 year warranty

Climate Shield™ zero-degree tested weather protection:

- Fully-enclosed and heated underbelly (ducted)
- 40,000 BTU output furnace
- Double layer fiberglass batt insulation (roof, floor & behind cap)
- PEX plumbing

HELIX Cooling System™ (industry exclusive):

- Dual exterior-mounted 15,000 BTU "Whisper Quiet" A/C units
- Jayco exclusive insulated dual duct design
- Directional and closeable A/C vents, larger return air vents with user accessible filters

JaySMART™ (Safety Markers And Reverse Travel) LED lighting (patent-pending)

Painted fiberglass front cap with built-in specialty LED lighting

Frameless, dark tinted, safety-glass windows

Custom automotive-grade vinyl exterior graphics package

Skirt metal enclosed drop frame

LED exterior lighting package

Dual 30 lb. propane bottles with auto regulator

Doorside compartment framed and vented for third propane bottle

Pass-through storage with Slam-latch™ baggage doors

Digital TV antenna with Wi-Fi extender

Exterior marine-grade speakers

Fully enclosed, universal docking center:

- Selectable water connections
- Quick-connect outside shower
- Black tank flush
- Winterization and sanitation
- Independent satellite
- Whole coach cable hookups

Water heater bypass

Battery disconnect

Under-mounted spare tire (Goodyear® Endurance® tires - made in the USA)

LP quick-connect (outside griddle/grill prep)

Built in sewer hose carrier

3,000 lb. tow hitch with 4-way pin

Inverter pre-wire to select outlets

INTERIOR

Solid hardwood slide fascia

Handcrafted hardwood glazed doors, drawers and trim

5/8 in. tongue-and-groove joined plywood floor decking

Vinyl flooring (made in the USA) throughout (includes slideout floors)

Ceiling fan (select models)

LED interior lighting throughout

LED accent lighting above slideouts

Tri-fold hide-a-bed sofa with residential sleep surface (select models)

Dual USB charging ports throughout

12V charging station

"Shoe garage" in hallway step (select models)

Flip-up tabletop storage next to tri-fold sofa (select models)

JayVoice voice command system - controls lighting, A/C and furnace

Soft close, heavy-duty, 75 lb. full-extension, steel ball-bearing drawer guides

Stainless steel kitchen sink

Residential-grade, pull-out kitchen faucet

Extra 120V power outlets in kitchen and slide rooms

Pull-out countertop extension with 24 in. x 24 in. butcher block bar top (select models)

Pull-out utility drawer under kitchen sink

Toe kick nightlights in bedroom and bathroom

Residential quilted bedspread and pillows

Gas-strutted under-bed storage

C.P.A.P. prepped bedroom

Carbon monoxide and LP detector

Flip-up hidden storage in bedroom chest of drawers (select models)

Built-in laundry hamper in wardrobe (select models)

Cup holders in bedroom nightstands

Bathroom skylight

LED backlit custom framed mirror

Residential bathroom backsplash

Porcelain toilet with foot flush

Vessel bowl sink in main bathroom

CUSTOMER VALUE PACKAGE (MANDATORY)

15,000 BTU "Whisper Quiet" A/C (main)

15,000 BTU "Whisper Quiet" A/C (bedroom)

Electric patio awning with integrated LED lights

Gas/electric DSI water heater

Custom machined aluminum rims

Keyed-Alike™ lock system (single key for all doors/locks)

Rooftop and ground solar prep

Backup and side observation camera prep

XL grab handle

50 in. SMART LED HDTV with fully digital HDMI® output

Home entertainment system with subwoofer

Hidden hinges on cabinet doors

Refrigerator temperature sensors linked to JAYCOMMAND®

Residential queen (60 in. x 80 in.) mattress with under-bed storage

5 STAR HANDLING PACKAGE (MANDATORY)

Goodyear® Endurance® tires (made in the USA)

MORryde® rubber pin box

Dexter® Axles with Nev-R-Adjust® brakes, E-Z Lube® hubs, & 4,000 lb. leaf springs

MORryde® CRE-3000™ rubberized suspension

Wet bolt fasteners and bronze bushings

LUXURY PACKAGE (MANDATORY)

6-point hydraulic auto-leveling system

2nd electric patio awning with integrated LED lights

MORryde® StepAbove™ entrance steps (main entrance)

JAYCOMMAND® "Smart RV" system

Cellular prep for antenna and JAYCOMMAND® "Smart RV" system

Tire Pressure Monitoring System (TPMS)

High gloss gelcoated sidewalls

Oversized multi-battery compartment (industry leading room for 4-6 batteries)

Frameless dark tinted safety-glass windows

Privacy roller shades

Free-standing (no pedestal) table with leaf and (2) free-standing and (2) folding chairs

LED fireplace with electric space heater

Central vacuum system

Drinking Water System™ (patent-pending)

30" residential microwave

21 cu. ft. residential refrigerator with 1800W inverter

Residential 24 in. Insignia™ stove (3.73 cu. ft. with 12,000 BTU high output burner)

Residential solid-surface kitchen countertop with bamboo sink cover and strainer

Washer/dryer prep

32 in. bedroom TV

Residential walk-in shower with shampoo/soap holder and teak seat

OPTIONS

True interior design choice (Modern Farmhouse or Classic Cottage)

Customer Value Package: 15,000 BTU central air with heat pump

Extreme Weather Package: 120V heated holding tank pads and 12V wrapped and heated fresh water line

Overlander II Solar Package: (30 amp controller, 1,800W inverter and (2) 190 watt solar panels)

Wireless backup/rear and side view observation camera kit

Tailgate 39 in. TV in cargo

Sani-Con® Turbo waste management system

Generator prep with 120 lb. max LP system (3) 40 lb. LP bottles

5,500W Onan® Microquiet generator

Frameless dual pane tinted safety-glass windows

Slideout awning (quantity varies by model)

Hydraulic disc brake package with 17.5" wheels with 'H' rated Goodyear® tires

3rd-15,000 BTU ducted A/C

18 cu. ft. Norcold® Polar Max gas/electric refrigerator

King residential foam-top mattress

Truma on-demand hot water system

Outside griddle for JayPort system (310RLTS, 373BHOK, 380RKGS)

Overlander EXT Solar Package: 3,000W inverter/charger with internal 50 amp transfer switch, energy management system, (6) solar panels with 200W each, (6) 100 amp/hour lithium batteries, 12V DCA/C, DC to DC battery charger, 100 amp MPPT controller

*Indicates split tanks

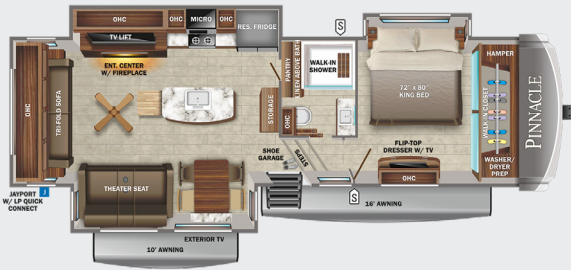
FLOORPLAN	EXTERIOR TRAVEL LENGTH	EXTERIOR WIDTH	EXTERIOR HEIGHT (WITH A/C)	INTERIOR HEIGHT (MAIN)	INTERIOR HEIGHT (UPPER DECK)	UNLOADED VEHICLE WEIGHT	DRY HITCH WEIGHT	GVWR	CARGO CARRYING CAPACITY	FRESH WATER CAPACITY (INCLUDING WATER HEATER)	GRAY WASTE WATER CAPACITY	BLACK WASTE WATER CAPACITY	SLEEPING CAPACITY
310RLTS	36' 2"	8' 0"	13' 4"	8' 5"	6' 7"	12,180	2,510	15,000	2,820	85	87*	50	4-5
340CKTS	37' 10"	8' 0"	13' 4"	8' 5"	6' 7"	12,901	2,635	15,750	2,849	87	87*	50	3-4
373BHOK	30' 11"	8' 0"	12' 9"	8' 3"	6' 6"	13,715	2,330	16,500	2,785	85	87*	87*	4-6
377RLBH	43' 0"	8' 0"	13' 3"	8' 6"	6' 7"	14,265	3,025	16,995	2,730	85	87*	50	8-10
380RKGS	42' 3"	8' 0"	13' 4"	8' 6"	6' 6"	14,025	2,880	16,500	2,475	85	74*	37	4-6
382FLRB	43' 11"	8' 0"	13' 3"	8' 6"	6' 7"	14,740	2,520	16,995	2,255	85	74*	74*	4-6



PINNACLE

32RLTS

OPTIONS: A, B



36FBTS

OPTIONS: A, B



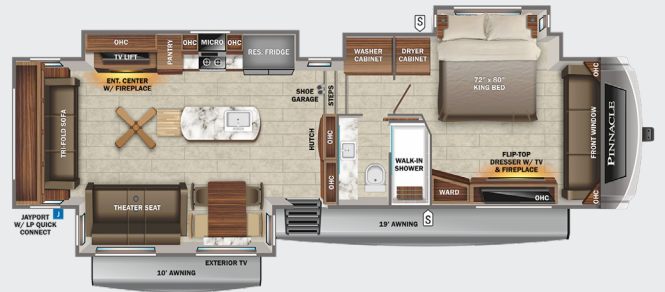
36KPTS

OPTIONS: A, B



36SSWS

OPTIONS: A, B, C



37MDQS

OPTIONS: A, B



38FLGS

OPTIONS: A, B, D



OPTIONS



STORAGE

MICRO

MICROWAVE

OHC

OVERHEAD CABINETS

FRIDGE

REFRIGERATOR

WARD

WARDROBE

A



18 Cu. Ft. Fridge

B



Queen Bed

C



Walk-In Closet

D



Butler Pantry

STANDARDS & OPTIONS

EXTERIOR

Stronghold VBL™ aluminum framed and vacuum bond laminated gelcoated fiberglass exterior walls (including rear wall and slide room end walls)

Magnum Truss™ XL6™ Roof System (strongest tested roof in the industry) with one piece, seamless roof material and a 20 year warranty

Climate Shield™ zero-degree tested weather protection:

- Fully enclosed and heated underbelly (ducted)
- 40,000 BTU output furnace
- Double layer fiberglass batt insulation (roof, floor & behind cap)
- PEX plumbing

HELIX Cooling System™ (industry exclusive):

- Dual exterior-mounted 15,000 BTU "Whisper Quiet" A/C units
- Jayco exclusive insulated dual duct design
- Directional and closeable A/C vents
- Larger return air vents with user accessible filters

JaySMART™ (Safety Markers And Reverse Travel) LED lighting (patent-pending)

Painted fiberglass front and rear cap with built-in specialty LED lighting

Frameless dark tinted safety-glass windows

Custom automotive-grade vinyl exterior graphics package

102" widebody construction

Skirt metal enclosed drop frame

LED exterior lighting package

Dual 30 lb. propane bottles with auto regulator

Doorside compartment framed and vented for third propane bottle

Pass-through storage with Slam-latch™ baggage doors

Digital TV antenna with Wi-Fi extender

Exterior marine-grade speakers

Fully enclosed, universal docking center:

- Selectable water connections
- Quick-connect outside shower
- Black tank flush
- Winterization and sanitation
- Independent satellite
- Whole coach cable hookups

Water heater bypass

Battery disconnect

Under-mounted spare tire (Goodyear® Endurance® tires - made in the USA)

LP quick-connect (outside grill prep)

Built in sewer hose carrier

3,000 lb. tow hitch with 4-way pin

Inverter pre-wire to select outlets

40,000 BTU furnace

12V heaters on all holding tanks

INTERIOR

Solid hardwood slide fascia

Handcrafted hardwood glazed doors, drawers and trim

5/8 in. tongue-and-groove joined plywood floor decking

Vinyl flooring (made in the USA) throughout including slide rooms

Ceiling fan (select models)

LED interior lighting throughout

LED accent lighting above slideouts

Tri-fold hide-a-bed sofa with residential sleep surface (select models)

Dual USB charging ports throughout

12V charging station

JayVoice voice command system - controls lighting, A/C and furnace

"Shoe garage" in hallway step (select models)

Flip-up tabletop storage next to tri-fold sofa (select models)

Soft close, heavy-duty, 75 lb. full extension, steel ball-bearing drawer guides

Toe kick nightlights in bedroom, bathroom and kitchen

Farmhouse stainless steel kitchen sink

Residential-grade, pull-out kitchen faucet

Extra 120V power outlets in kitchen and slide rooms

Pull-out countertop extension with 24 in. x 24 in. butcher block bar top (select models)

Pull-out utility drawer under kitchen sink

Residential quilted bedspread and pillows

Cedar-lined front wardrobe closet

Gas-strutted under-bed storage

C.P.A.P. prepped bedroom

Carbon monoxide and LP detector

Flip-up hidden storage in bedroom chest of drawers (select models)

Built-in laundry hamper in wardrobe (select models)

Cup holders in bedroom nightstands (N/A 36SSWS)

Bathroom skylight

LED backlit custom framed mirror

Residential bathroom backsplash

Recessed vessel bowl sink in main bath

Porcelain toilet with foot flush

CUSTOMER VALUE PACKAGE (MANDATORY)

15,000 BTU "Whisper Quiet" A/C with heat pump (main)

15,000 BTU "Whisper Quiet" A/C (bedroom)

Electric patio awning with integrated LED lights

Gas/electric DSI water heater

Custom machined aluminum rims

Keyed-Alike™ lock system (single key for all doors/locks)

Rooftop and ground solar prep

Backup and side observation camera prep

Hidden hinges on cabinet doors

Home entertainment system with subwoofer

50 in. SMART LED HDTV with fully digital HDMI® output

Wireless remote control system (includes Bluetooth® wireless interior controls)

Residential king (72 in. x 80 in.) mattress with under-bed storage

Refrigerator temperature sensors linked to JAYCOMMAND®

5 STAR HANDLING PACKAGE (MANDATORY)

Goodyear® Endurance® tires (made in the USA)

MORryde® rubber pin box

Dexter® axles with Nev-R-Adjust® brakes, E-Z Lube® hubs, & 4,000 lb. leaf springs

MORryde® LRE-4000™ rubberized suspension

Wet bolt fasteners and bronze bushings

LUXURY PACKAGE (MANDATORY)

6-point hydraulic auto-leveling system

MORryde® StepAbove™ entrance steps (main entrance)

2nd electric patio awning with integrated LED lights

Powered 50-amp cord reel

JAYCOMMAND® "Smart RV" system

Cellular prep for antenna and JAYCOMMAND® "Smart RV" system

Tire Pressure Monitoring System (TPMS)

High gloss gelcoated sidewalls

Oversized multi-battery compartment (industry leading room for 4-6 batteries)

32" outside LED TV

Hardwood cabinet stiles

Central vacuum system

Day/night roller shades in living room

Frameless dark tinted safety-glass windows

Free-standing (no pedestal) table with leaf, 2 free-standing (with under seat storage) and (2) folding chairs

LED fireplace with electric space heater

Drinking Water System™ (patent-pending)

Residential refrigerator with 1800W pure sine wave inverter

30" residential microwave

Residential 24 in. Insignia™ stove (3.73 cu. ft. with 12K BTU high output burner)

Residential solid-surface kitchen countertop with solid-surface sink covers

32 in. bedroom TV

Residential walk-in shower with shampoo/soap holder/teak seat

Washer/dryer prep

OPTIONS

True interior design choice (Modern Farmhouse or Silver Mist)

Truma on-demand hot water system

Full body paint- Sand, Steel and Diamond

Overlander II Solar Package (30 amp controller, 1,800W inverter and (2) 190 watt solar panels)

Wireless backup/rear and side view observation camera kit

Sani-Con® Turbo waste management system

Generator prep with 120 lb. max LP system includes (3) 40lb. LP bottles

5,500W Onan® Microquiet generator

Frameless dual-pane tinted safety-glass windows

Slideout awning (quantity varies by model)

Hydraulic disc brake package with 17.5" wheels and 'H' rated Goodyear® tires

3rd-15,000 BTU ducted A/C

18 cu. ft. Norcold® Polar Max gas/electric refrigerator

Queen residential foam-top mattress

Front wardrobe in place of front windshield and sofa lounge (36SSWS)

Butler's pantry (in place of half bath, 38FLGS)

Outside griddle for JayPort system (32RLTS, 36FBTS, 36KPTS, 36SSWS)

Overlander EXT Solar Package: 3,000W inverter/charger with internal 50 amp transfer switch, energy management system, (6) solar panels with 200W each, (6) 100 amp/hour lithium batteries, 12V DC A/C, DC to DC battery charger, 100 amp MPPT controller

*Indicates split tanks

FLOORPLAN	EXTERIOR TRAVEL LENGTH	EXTERIOR WIDTH	EXTERIOR HEIGHT (WITH A/C)	INTERIOR HEIGHT (MAIN)	INTERIOR HEIGHT (UPPER DECK)	UNLOADED VEHICLE WEIGHT	DRY HITCH WEIGHT	GVWR	CARGO CARRYING CAPACITY	FRESH WATER CAPACITY (INCLUDING WATER HEATER)	GRAY WASTE WATER CAPACITY	BLACK WASTE WATER CAPACITY	SLEEPING CAPACITY
32RLTS	36' 4"	8' 6"	12' 8"	8' 5"	6' 7"	12,810	2,540	15,500	2,690	85	87*	50	3-4
36FBTS	40' 10"	8' 6"	13' 4"	8' 6"	6' 7"	13,635	2,940	16,500	2,865	85	87*	87*	3-4
36KPTS	41' 1"	8' 6"	13' 4"	8' 6"	6' 7"	13,540	2,920	16,500	2,960	85	87*	87*	3-4
36SSWS	40' 0"	8' 6"	13' 4"	8' 7"	6' 6"	14,105	3,270	16,750	2,645	85	87*	50	3-5
37MDQS	41' 8"	8' 6"	13' 4"	8' 6"	6' 7"	14,445	3,370	16,995	2,550	85	87*	50	5-7
38FLGS	44' 4"	8' 6"	13' 5"	8' 6"	6' 7"	15,195	2,965	17,750	2,555	85	82.5*	74*	4-6

PINNACLE INTERIOR DESIGN



MODERN FARMHOUSE



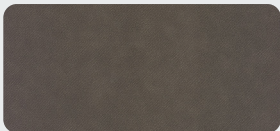
Wood



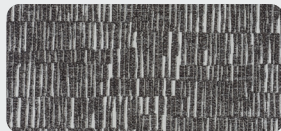
Floor



Countertop



Main Fabric



Accent Fabric

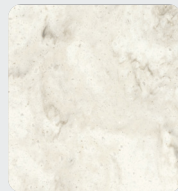
SILVERMIST



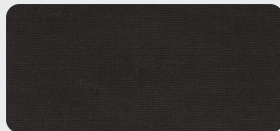
Wood



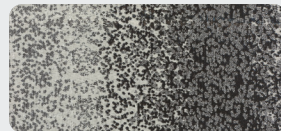
Floor



Countertop



Main Fabric



Accent Fabric

PINNACLE PAINT OPTIONS



DIAMOND FULL-BODY PAINT



SAND FULL-BODY PAINT



STEEL FULL-BODY PAINT

5-STAR HANDLING PACKAGE

The 5-Star Handling Package is a Jayco exclusive, a powerful blend of high-end American-made components that make pulling a luxury fifth wheel a breeze.



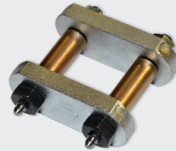
DEXTER® AXLES WITH NEV-R-ADJUST® BRAKES

The Benchmark of the trailer industry!



MORryde® PIN BOX

Allows pin box to travel forward and backward as well as side-to-side, creating a smoother tow.



DEXTER® HEAVY-DUTY 1/2" SHACKLES WITH WET BOLT FASTENERS AND BRONZE BUSHINGS

Resists the wear-and-tear of towing.



MORryde® RUBBERIZED SUSPENSION SYSTEM

Better absorbs and isolates road shock.



GOODYEAR® BEAST TIRES

Made in the U.S.A. and featuring the patented Durawall® technology.

JAYVOICE

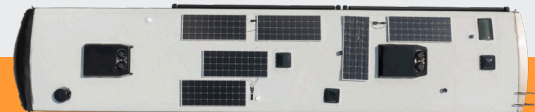


JayVoice activates the systems listed below with a voice-activated command.

- Interior lights
- Exterior lights
- Bedroom lights
- Living room lights
- Dinette lights
- Kitchen lights
- Main A/C
- Second A/C

Jayco OVERLANDER EXT

SOLAR POWER MANAGEMENT SYSTEM



Overlander EXT Solar Package- 3,000W inverter/charger with internal 50 amp transfer switch, energy management system, (6) solar panels with 200W each, (6) 100 amp/hour lithium batteries, DC to DC battery charger, 100 amp MPPT controller

Meet your Jayco Dealer



Scan QR code for specification definitions

Some specs at the time of print may include estimates. For the most updated information, please visit Jayco.com/north-point/ or Jayco.com/pinnacle

Jayco, Inc. | P.O. Box 460 | Middlebury, IN 46540

See dealer for further information and prices. All information in this brochure and on www.jayco.com is the latest available at the time of publication approval. Jayco reserves the right to make changes and to discontinue models without notice or obligation. Photography may show optional equipment or props used for decoration purposes only. RVs built for sale in Canada may differ to conform to Canadian codes. JAYCO and the JAYCO BIRD IN FLIGHT are registered trademarks of Jayco, Inc. Printed in USA 12/21 ©2021 Jayco, Inc. 257087



Jayco - Part of the Jayco Family of Companies